

Update Manual

for KU SG 2.45-25 B, KU SG 2.45-250 D
 and KU SG 2.45-450 A



Directors: Ian Duke/Gustav Wenhold
 Reg no: HRB 3350 Hof, VAT-ID-No: DE 813343044, WEEEReg.-Nr. DE34186665

Kuhne electronic GmbH
 Scheibenacker 3, 95180 Berg
 Germany

A DIVISION OF

ALARIS
THE RF TECHNOLOGY GROUP

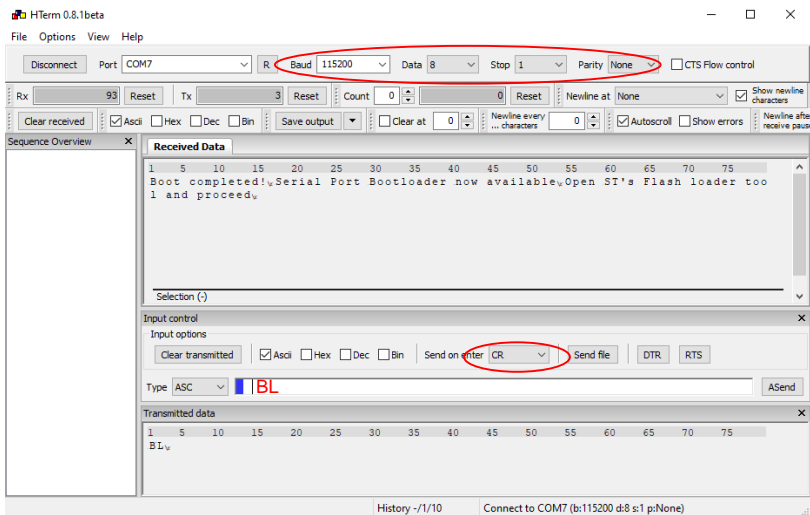


Connect UART – TTL Cable

- Connect the generator to 32 V supply voltage.
- Connect UART to USB Cable (please refer to the product specific manual)

Start Bootloader (KU SG 450 A)

- Connect the Microwave Generator with your PC and check the COM port number of the adapter.
- Open Hterm.exe or another Terminal Programm (set up as in the picture 1).
- Connect COM Port.
- Power up generator.
- Type „BL“ and press enter. (The LED is off)
- Disconnect COM Port.



Picture 1

Start Bootloader KU SG 250D and KU SG 25 B

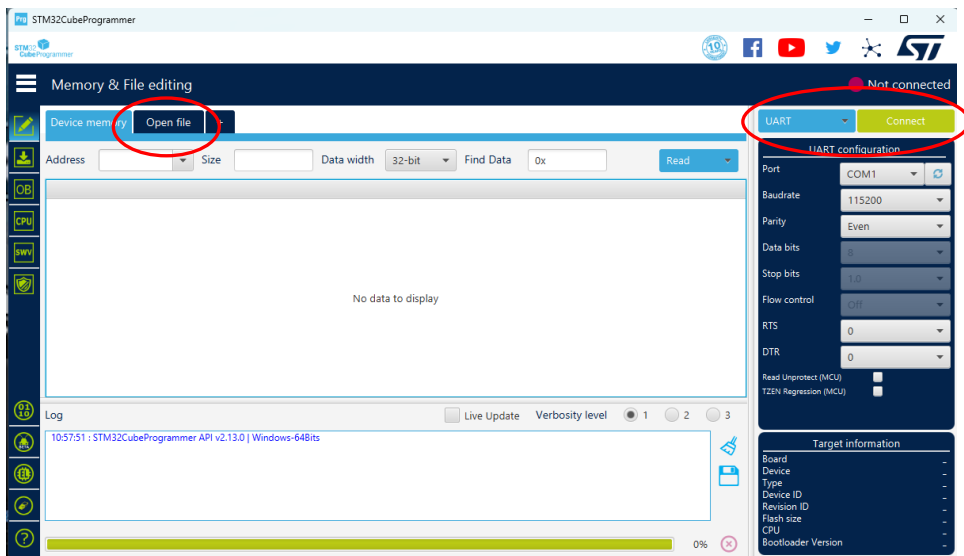
- Connect the microwave generator with your PC and check the COM port number of the adapter.
- Press the BL-button (i.e. with a paperclip) on power up. The LED should light in turquoise.



Picture 2

Update via STM32 Cube Programmer

- Install the STM32 CUBE PROGRAMMER on your PC
- Connect the Microwave Generator with your PC and start bootloader as described before.
- Start the STM32 CUBE PROGRAMMER and make the settings (see picture 3). Select UART and COM port number of your adapter.
- Click „Open file“ and select flash BIN-file.
- Click CONNECT and wait for bootloader connection.
- Press DOWNLOAD and wait for end (picture 4).
- Press DISCONNECT.
- Power the generator down and restart.



Picture 3

Update via STM32 Cube Programmer

STM32CubeProgrammer

Memory & File edition

Device memory SG250W-D.bin

Address 0x0 Size 0x18360 Data width 32-bit Find Data 0x Download

Address	0	4	8	C	ASCII
0x00000000	20020000	08004299	08003F6D	08003F73	...B...m7..s7..
0x00000010	08003F79	08003F7F	08003F85	00000000	y7...?..?.....
0x00000020	00000000	00000000	00000000	08003F8B?.....
0x00000030	08003F99	00000000	08003FA7	08003FB5	.7.....\$7..µ7..
0x00000040	080042E9	080042E9	080042E9	080042E9	ëB...ëB...ëB...A7..
0x00000050	080042E9	080042E9	080042E9	080042E9	ëB...ëB...ëB...ëB...
0x00000060	080042E9	080042E9	080042E9	080042E9	ëB...ëB...ëB...ëB...
0x00000070	080042E9	080042E9	080042E9	080042E9	ëB...ëB...ëB...ëB...
0x00000080	080042E9	080042E9	080042E9	080042E9	ëB...ëB...ëB...ëB...
0x00000090	080042E9	080042E9	080042E9	080042E9	ëB...ëB...ëB...ëB...
0x000000A0	080042E9	080042E9	080042E9	080042E9	ëB...ëB...ëB...ëB...
0x000000B0	080042E9	080042E9	080042E9	080042E9	ëB...ëB...ëB...ëB...
0x000000C0	080042E9	080042E9	080042E9	080042E9	ëB...ëB...ëB...ëB...

Meldung
File download complete
OK

Log

```

07:40:37 : File : SG250W-D.bin
07:40:37 : Size : 99168 Bytes
07:40:37 : Address : 0x08000000
07:40:37 : Erasing memory corresponding to segment 0:
07:40:37 : Erasing internal memory sectors [0..48]
07:40:38 : Download in Progress:
07:41:03 : File download complete
07:41:03 : Time elapsed during download operation: 00:00:25.920
  
```

Verbosity level 1 2 3

Connected

UART configuration

Port COM7

Baudrate 115200

Parity Even

Data bits 8

Stop bits 1.0

Flow control CTS

Read Unprotect (MCU) ☐

Target information

Board --

Device STM32G47x/G48x

Type MCU

Device ID 0x469

Revision ID --

Flash size 512 KB - Default

CPU Cortex-M4

Picture 4